

**FIGURE 7.2** *Anatomy of the anterior and posterior aspects of the skull, page 201.*

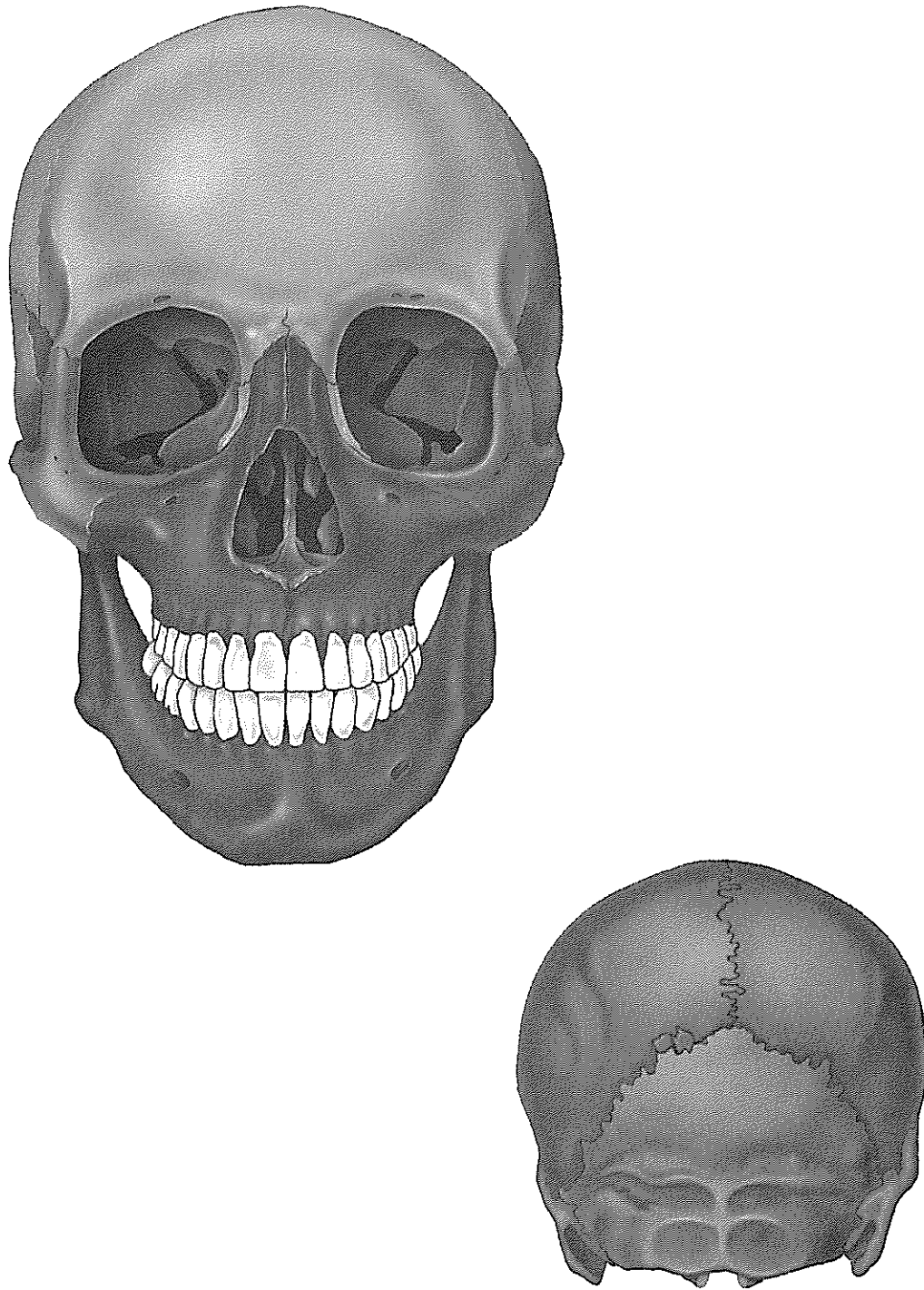
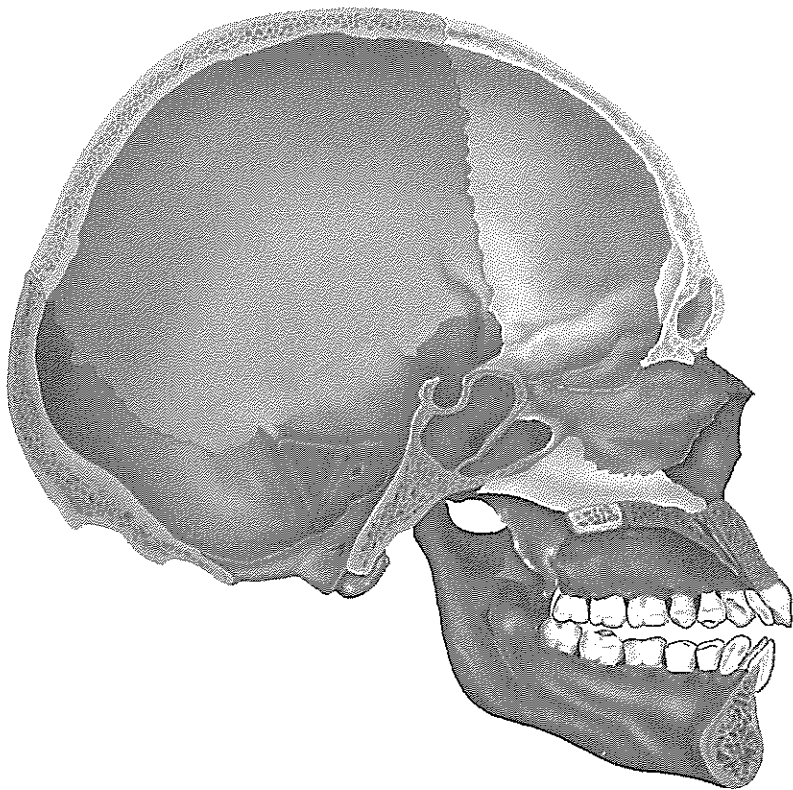
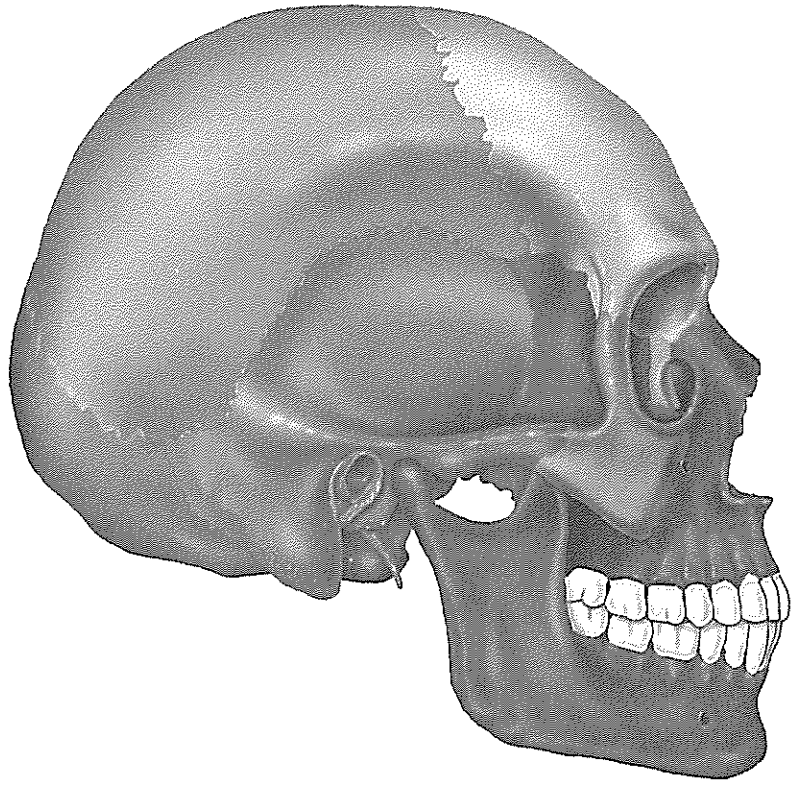


FIGURE 7.3 *Anatomy of the lateral aspects of the skull, page 202.*



**FIGURE 7.4a–b** *Anatomy of the inferior portion of the skull, page 204.*

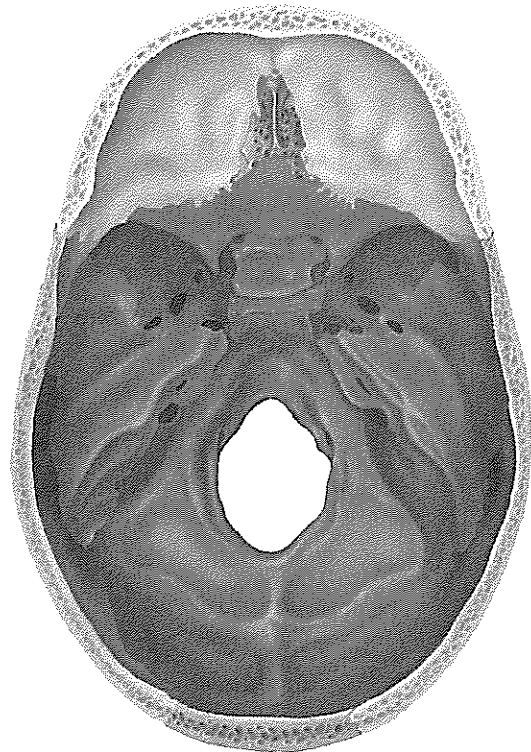
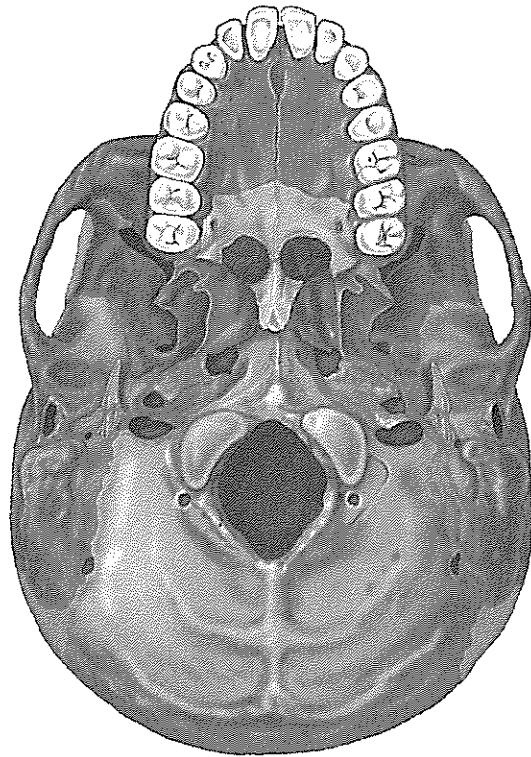


FIGURE 7.5 *The temporal bone, page 205.*

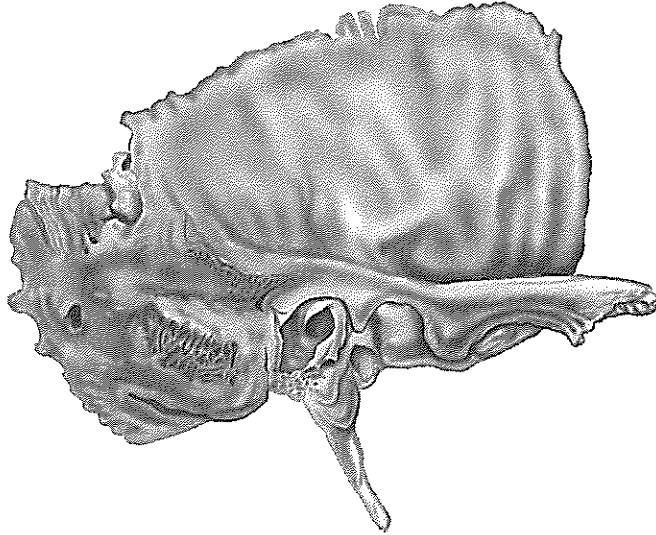


FIGURE 7.6 *The sphenoid bone, page 206.*

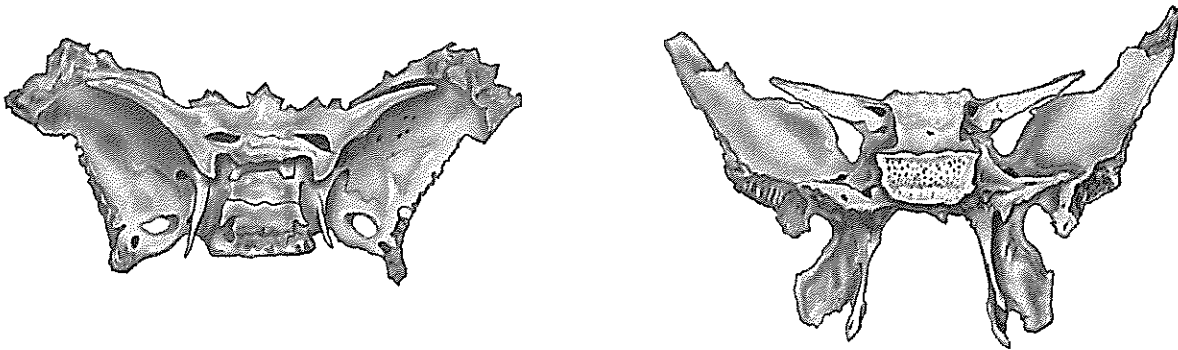


FIGURE 7.7 *The ethmoid bone, page 207.*

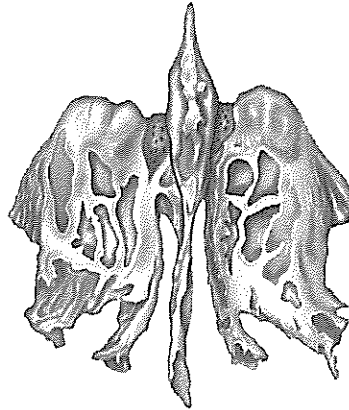
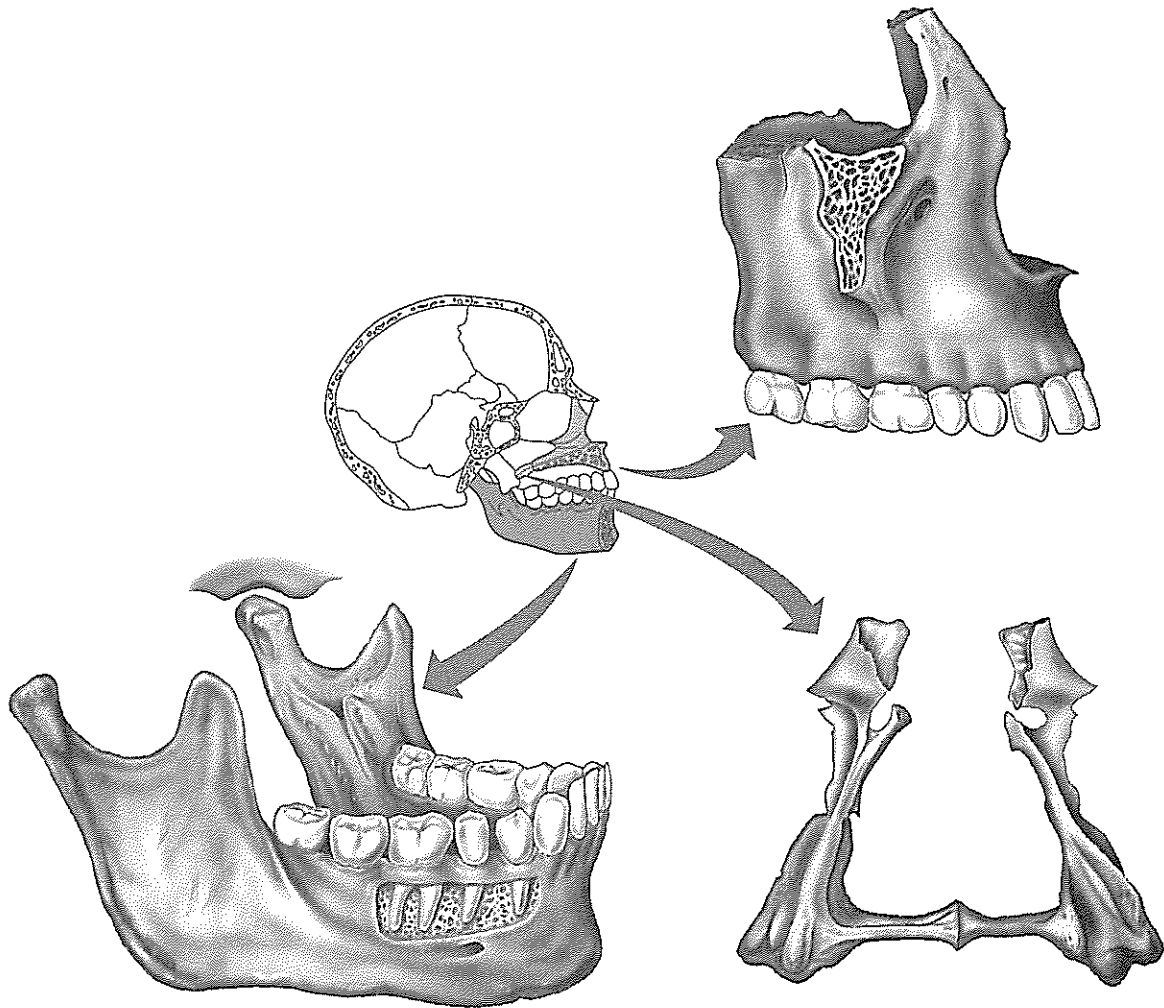


FIGURE 7.8 *Detailed anatomy of some isolated facial bones, page 208.*



**FIGURE 7.9b** *Special anatomical characteristics of the orbits, page 210.*



**FIGURE 7.10** *Special anatomical characteristics of the nasal cavity, page 211.*

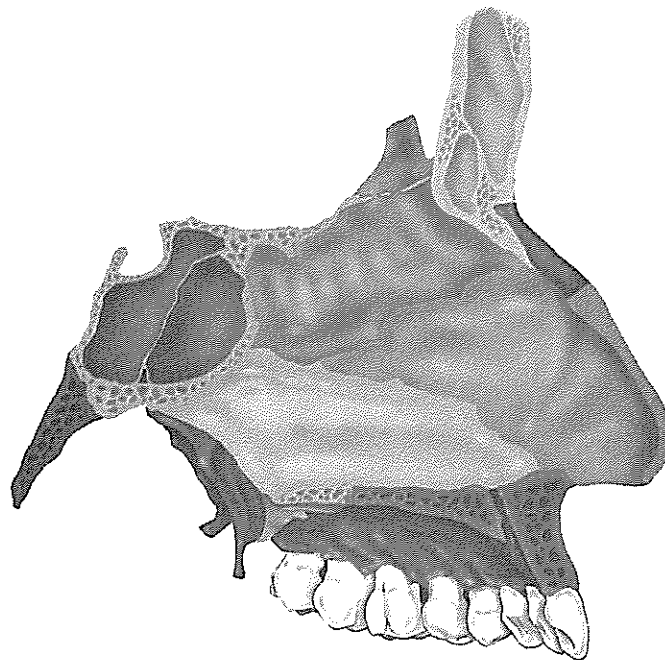
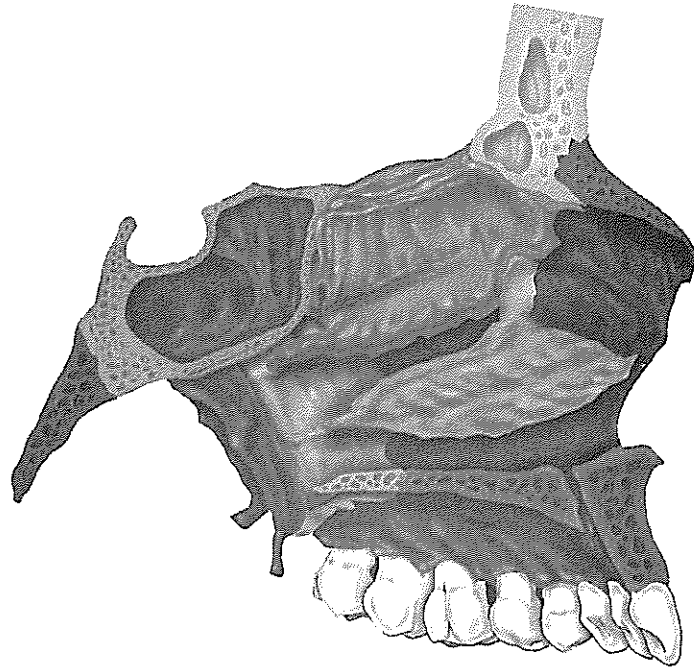


FIGURE 7.13 *The vertebral column, page 215.*

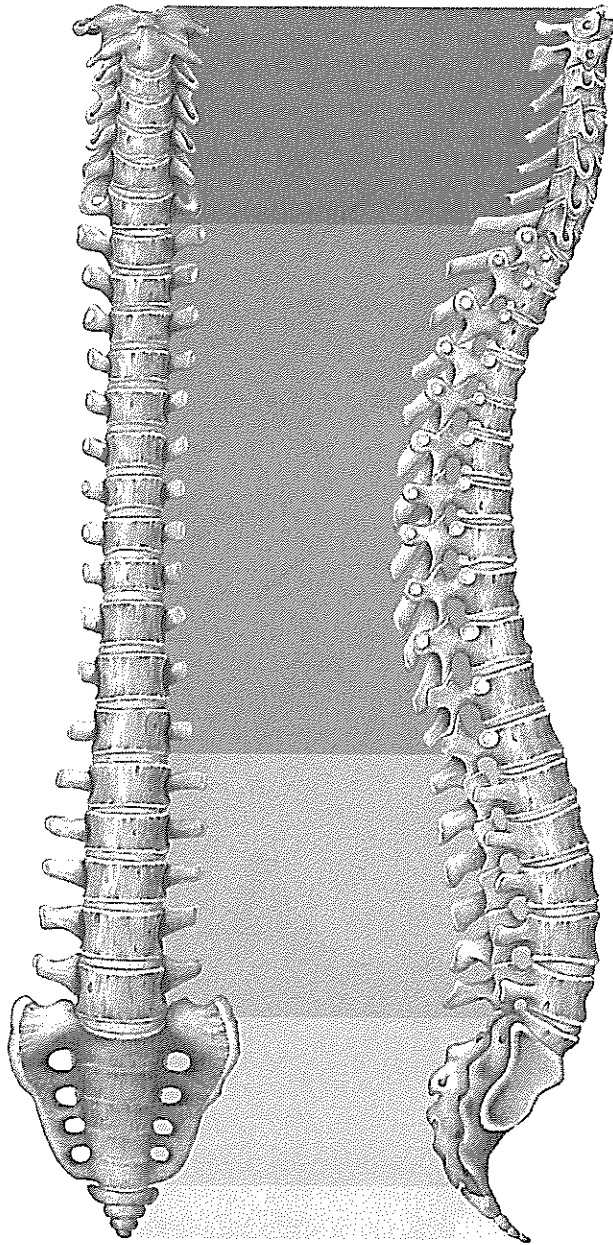




FIGURE 7.16 *The first and second cervical vertebrae, page 219.*

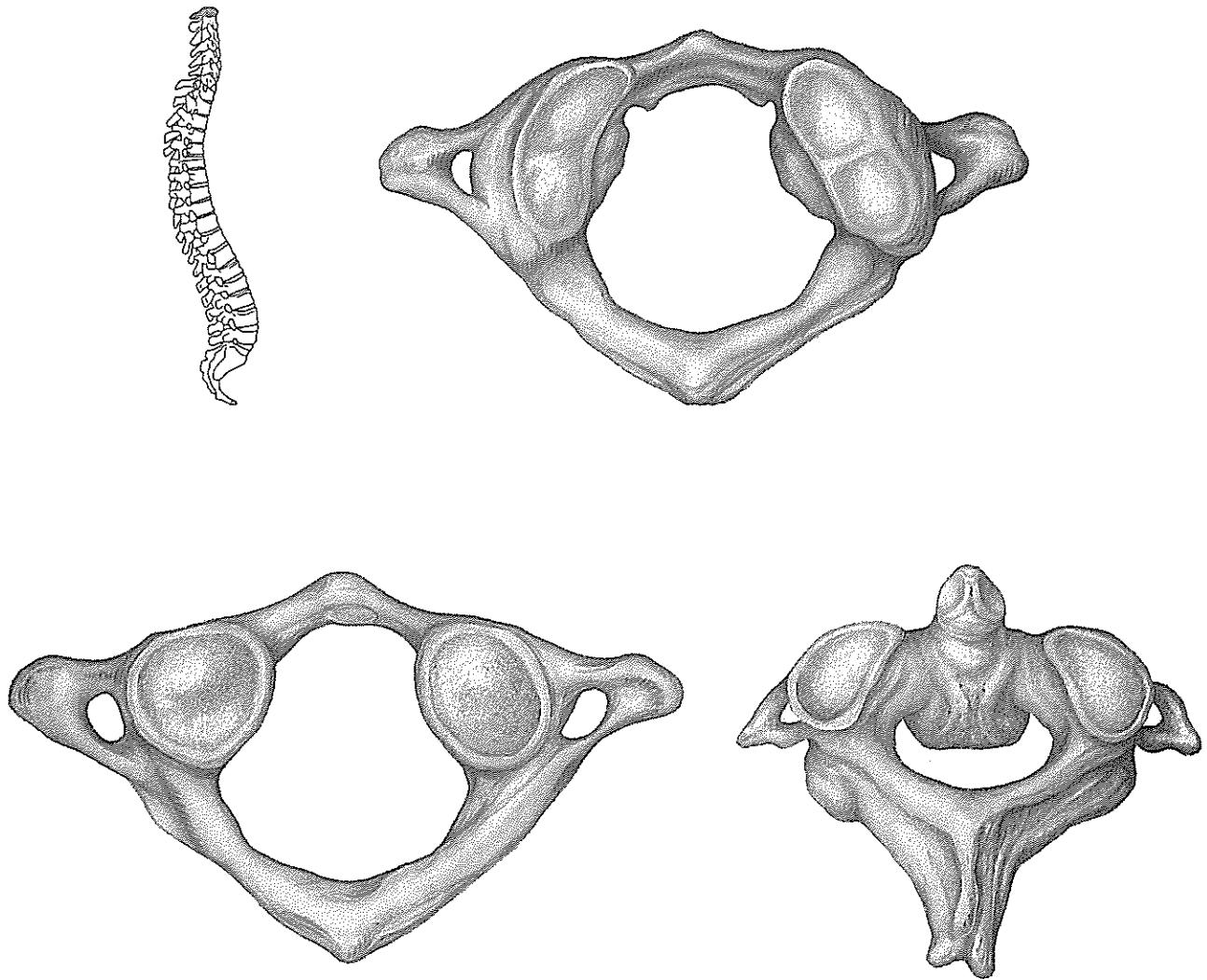


FIGURE 7.17 *Posterolateral views of articulated vertebrae, page 220.*

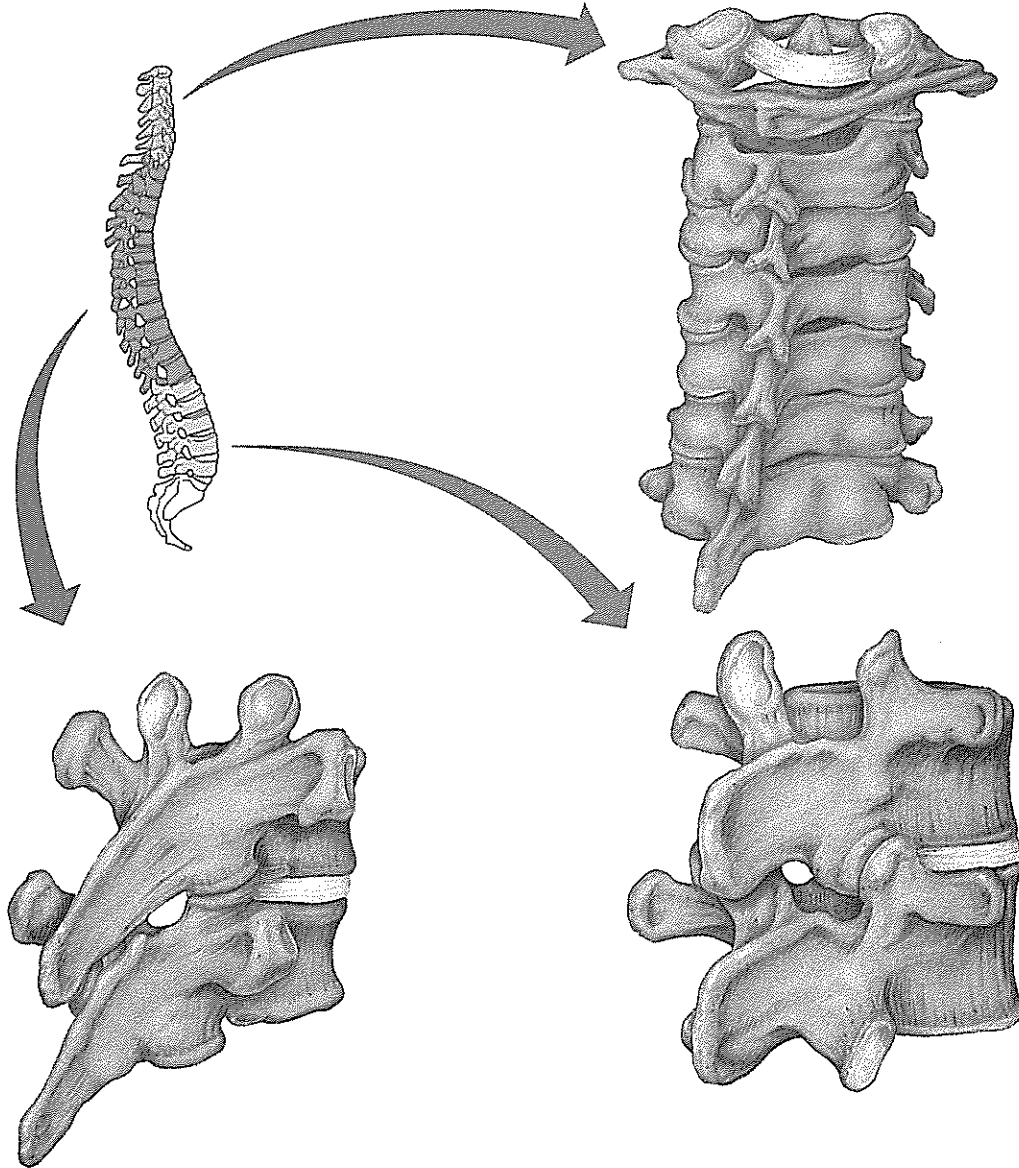


FIGURE 7.18 *The sacrum and coccyx, page 221.*

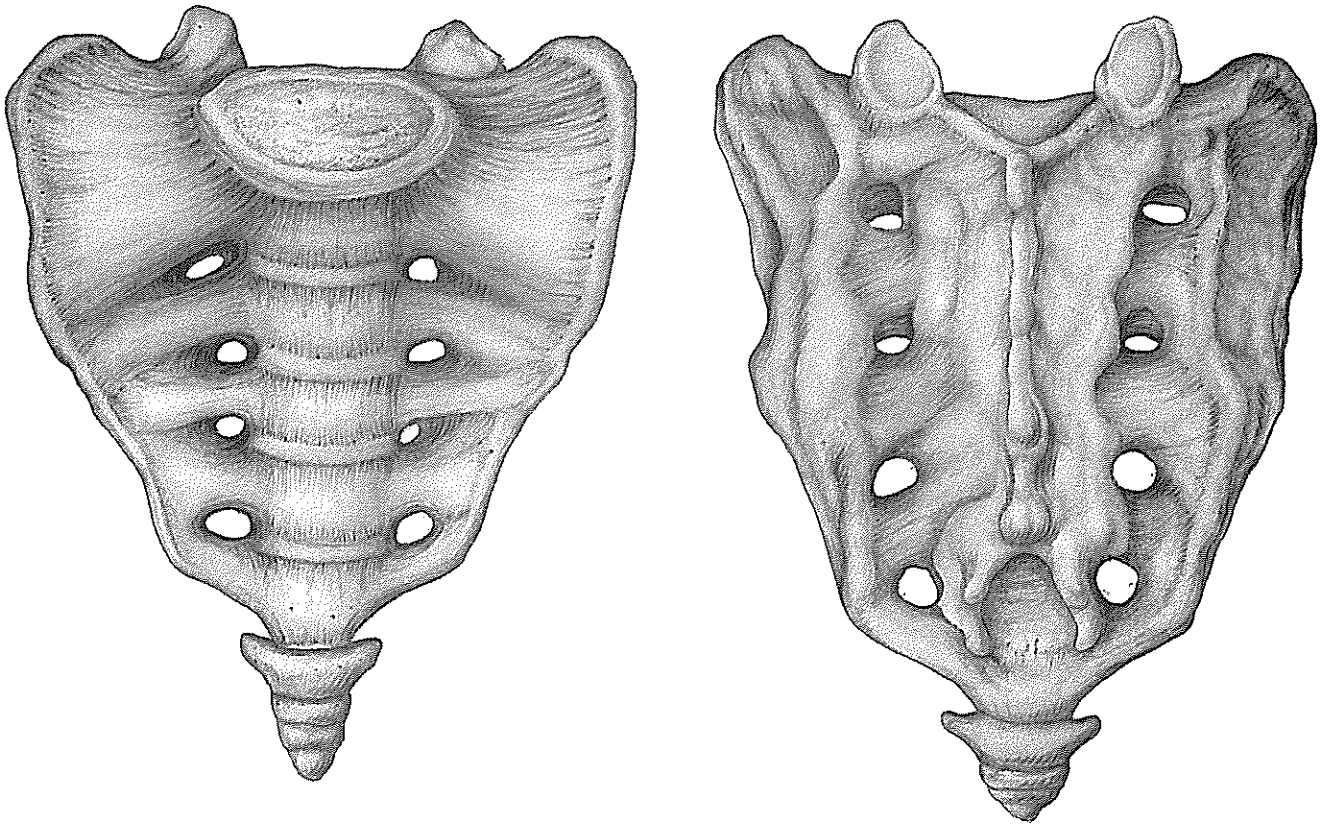


FIGURE 7.19 *The bony thorax, page 222.*

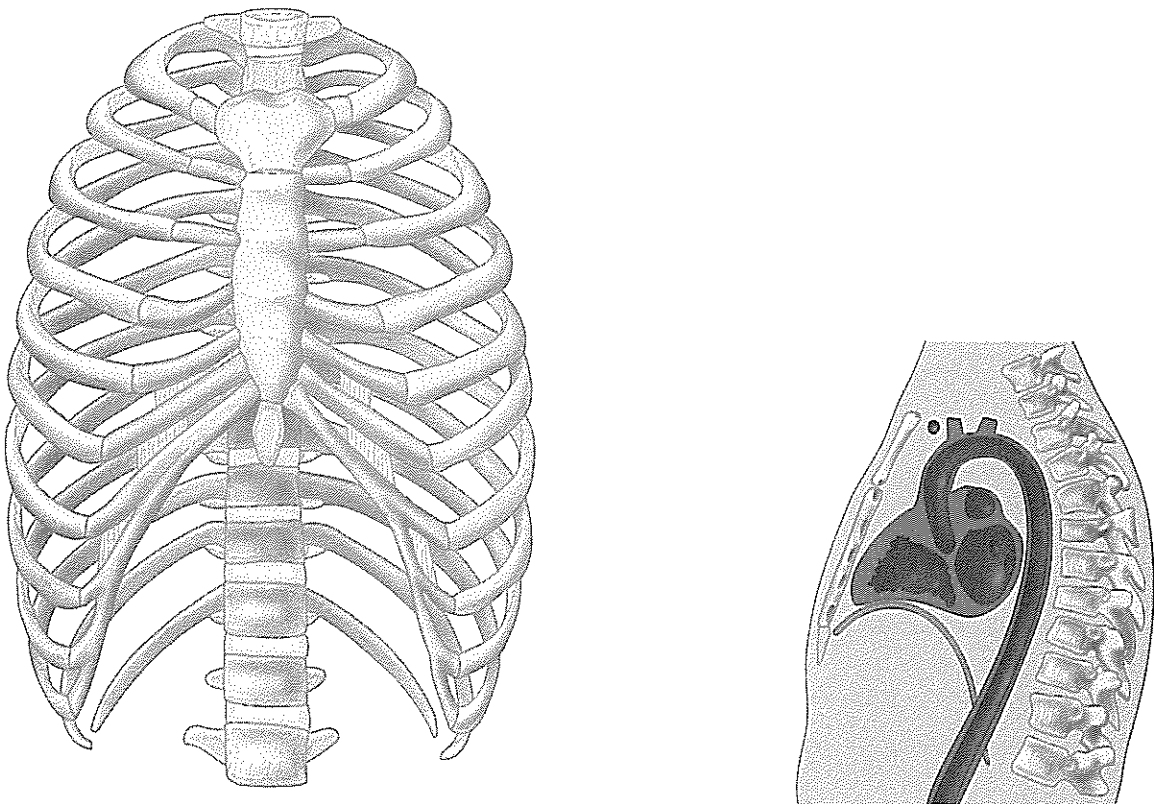


FIGURE 7.21 *The appendicular skeleton, page 225.*

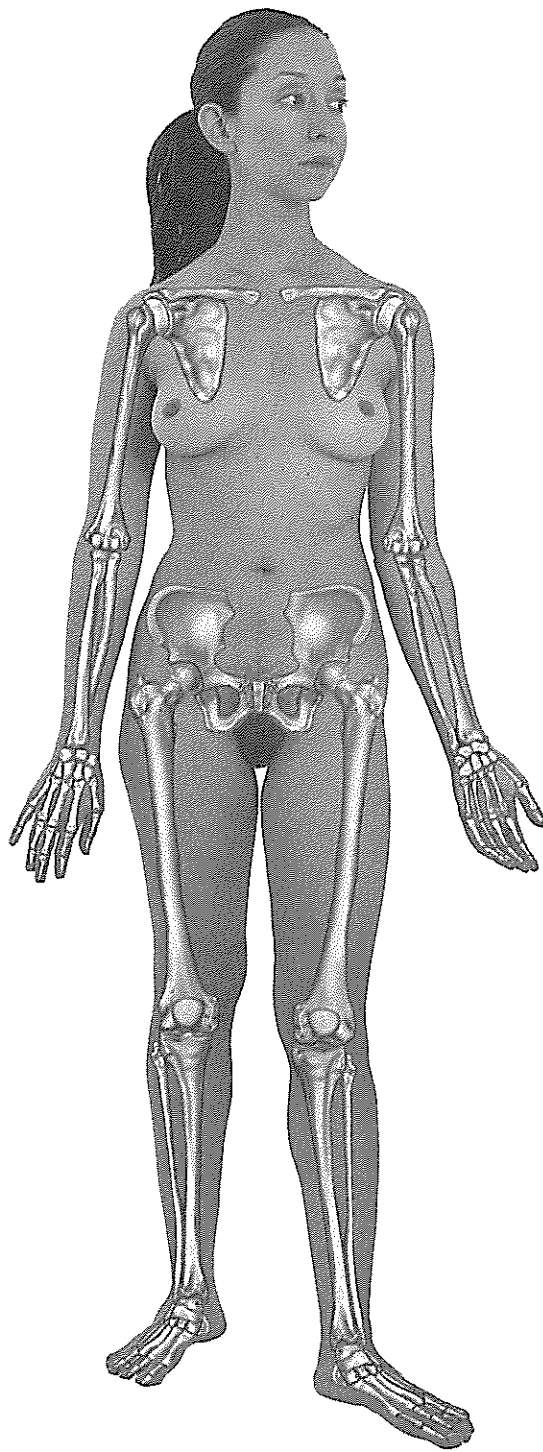


FIGURE 7.23 *The humerus of the arm, page 228.*

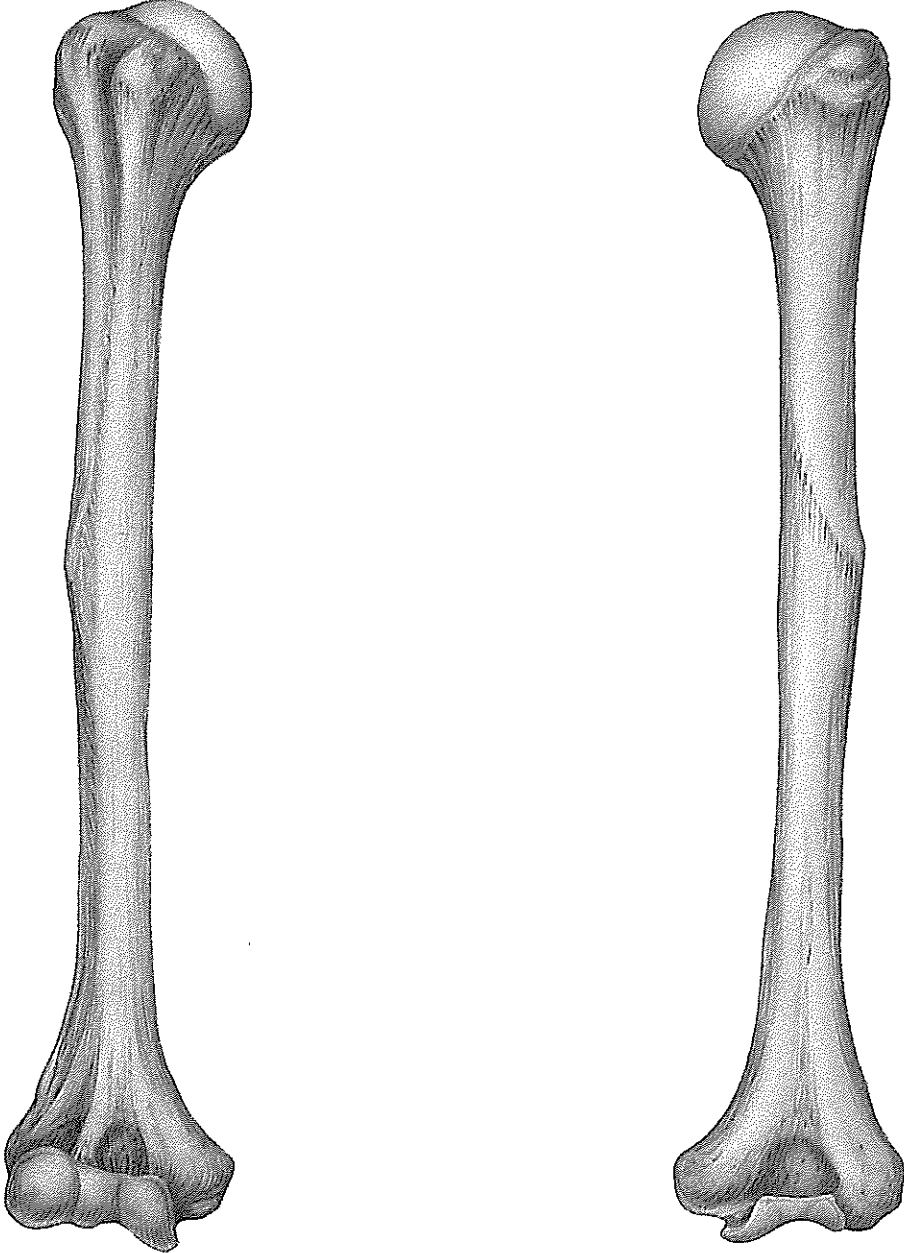
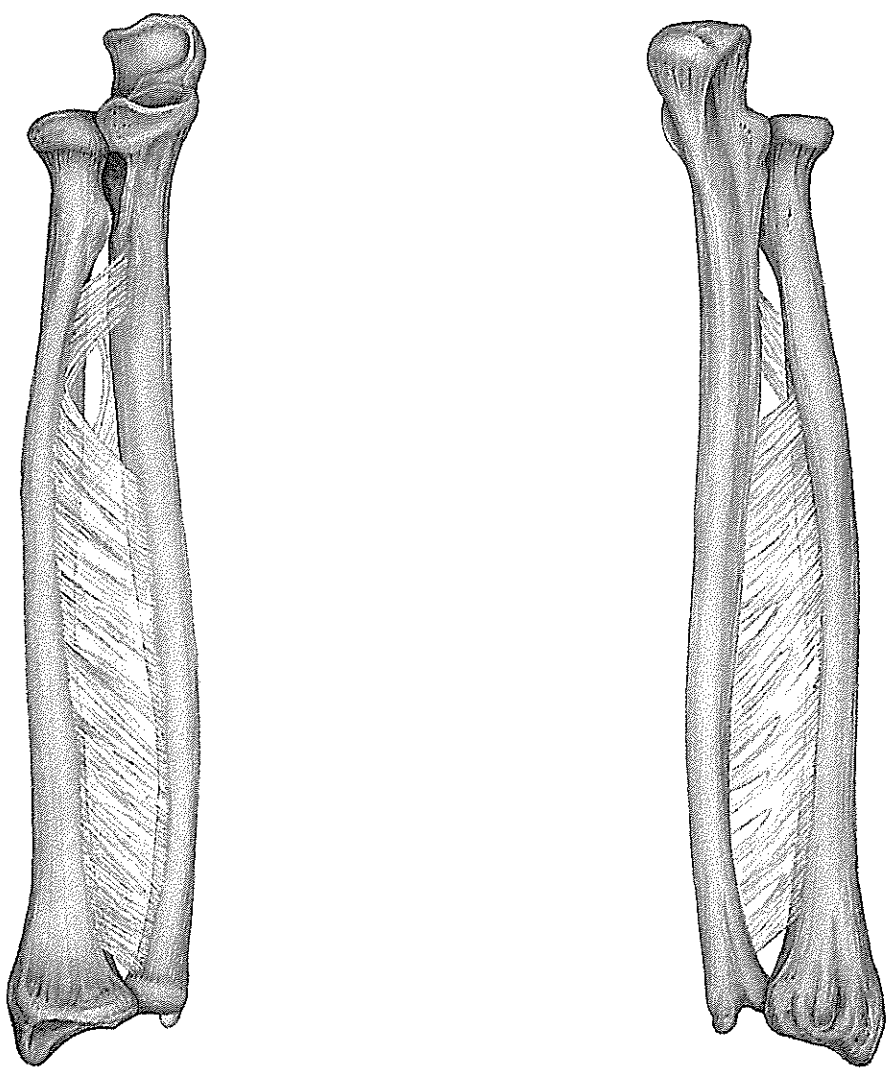


FIGURE 7.24a–b *Bones of the forearm, page 230.*



**FIGURE 7.26a** *Bones of the hand, page 232.*

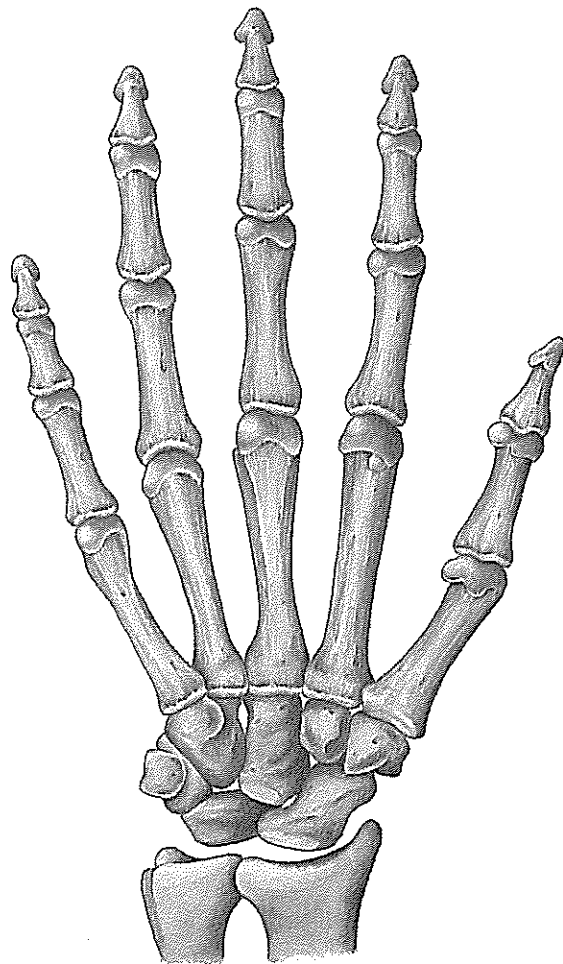
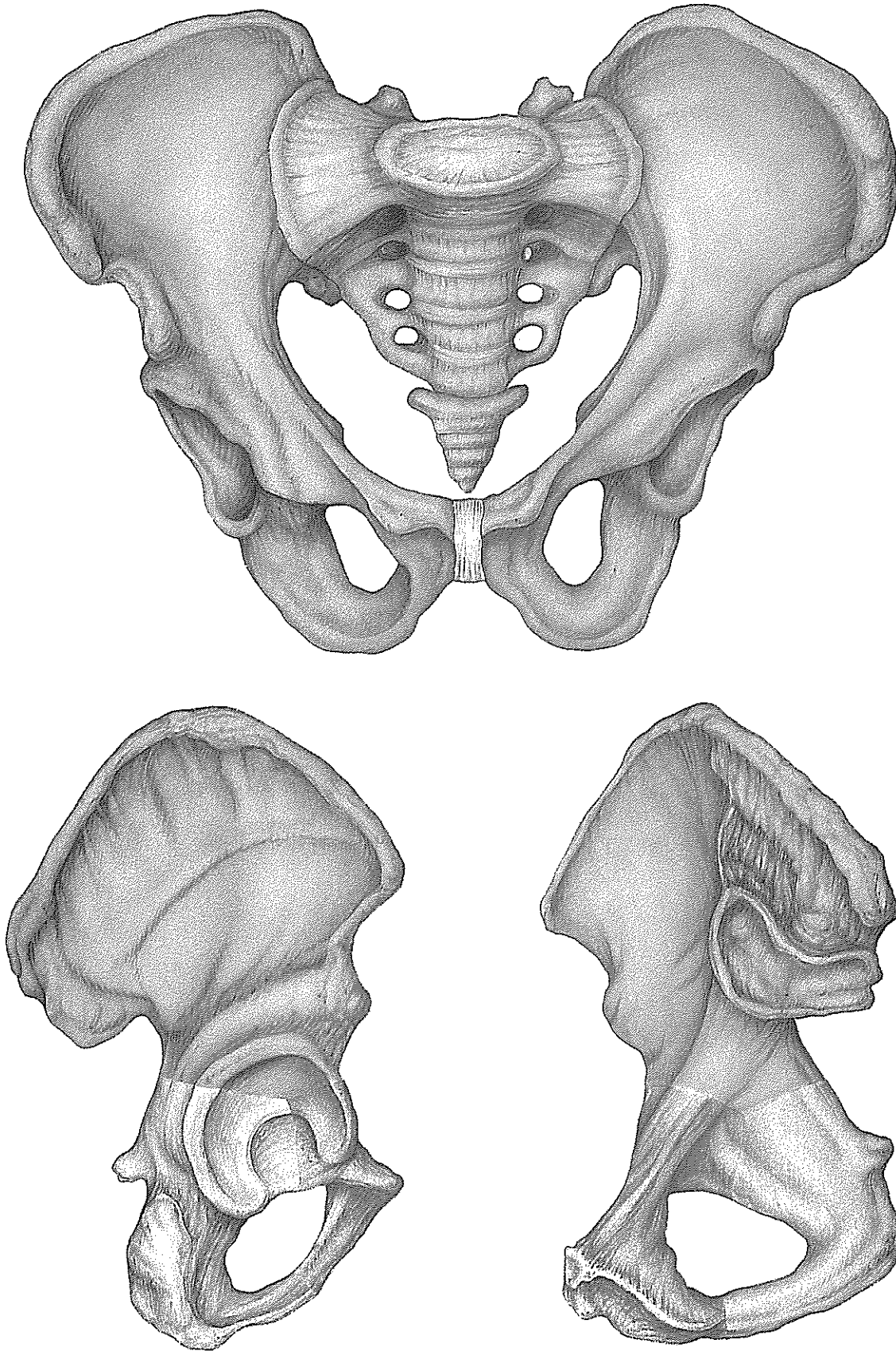


FIGURE 7.27 *Bones of the bony pelvis, page 234.*





**FIGURE 7.28a–b** *Bones of the right thigh and knee, page 237.*

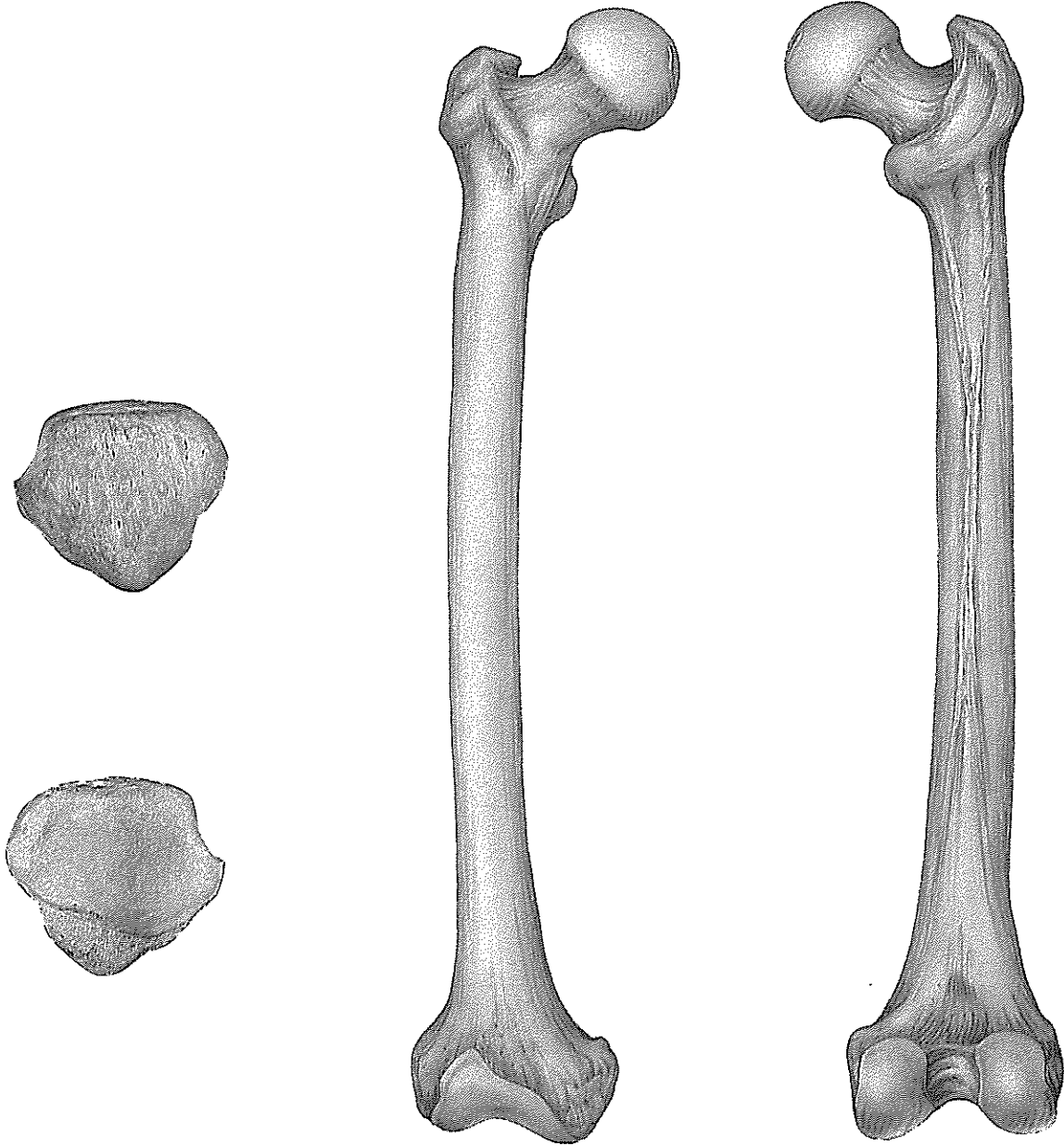
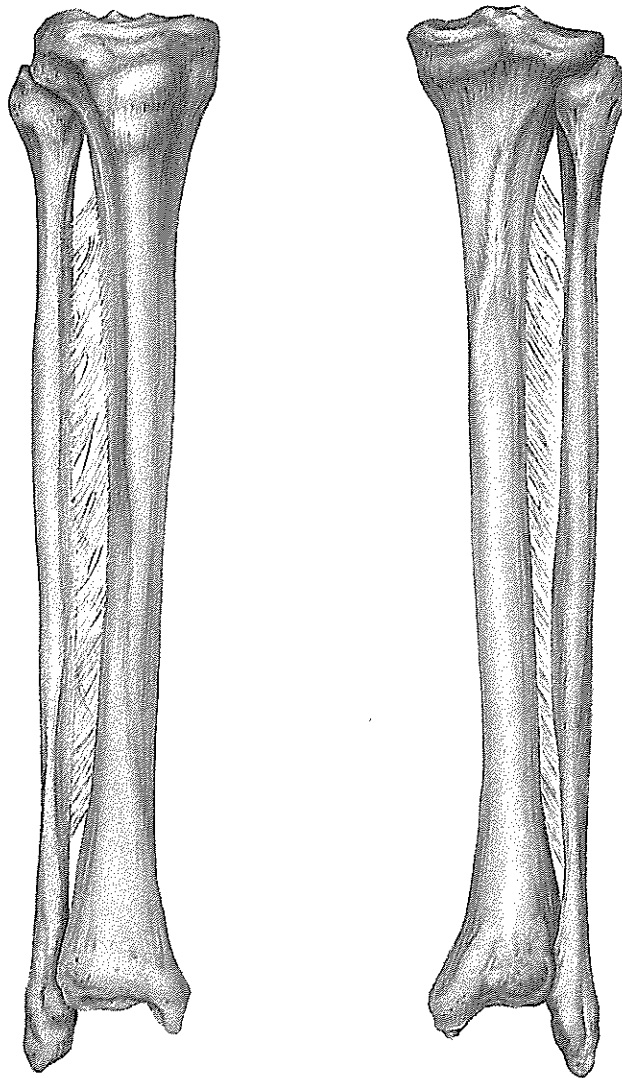
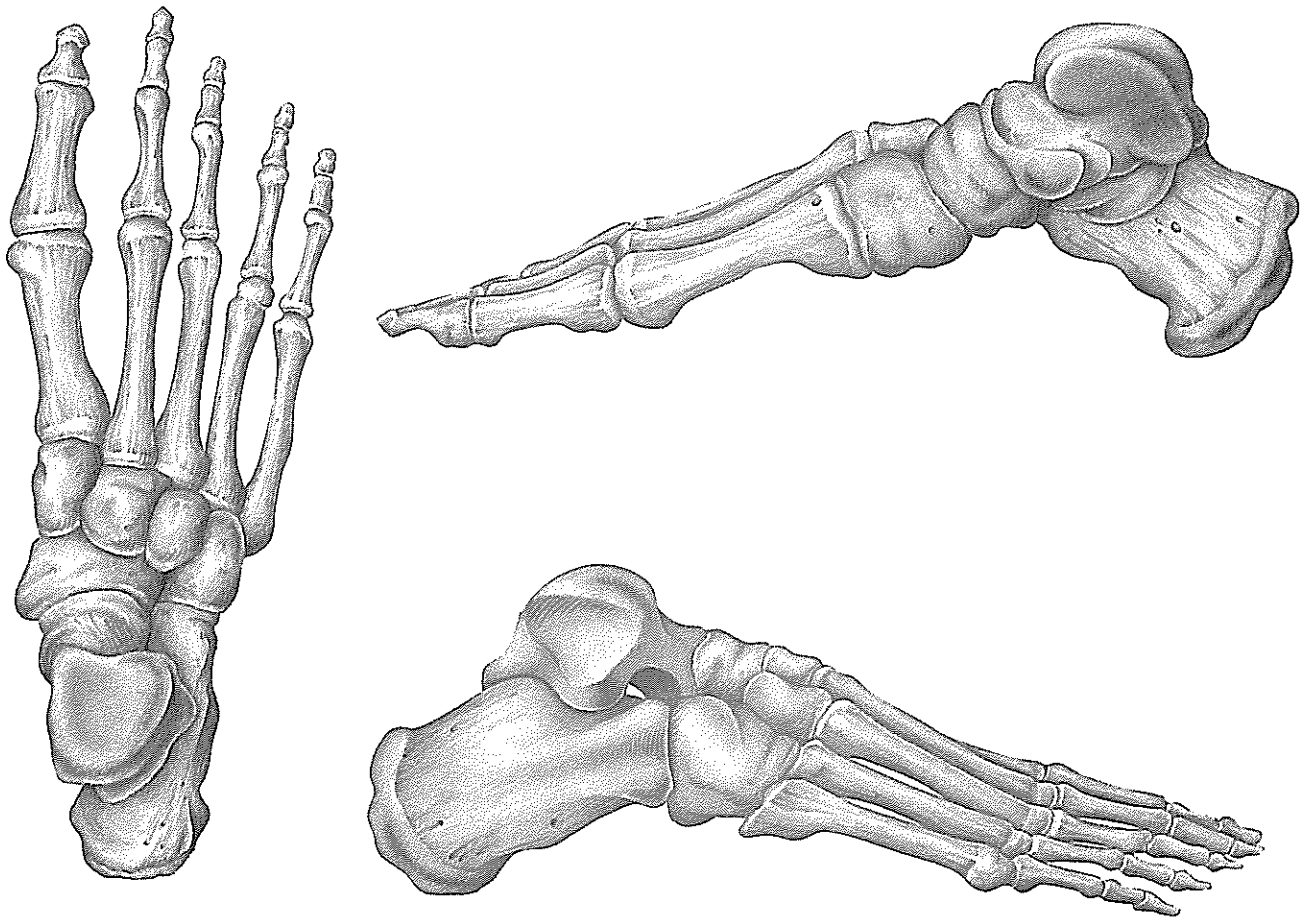


FIGURE 7.29a The tibia and fibula of the right leg, page 238.



**FIGURE 7.31** *Bones of the right foot, page 242.*



**FIGURE 7.32** *Arches of the foot, page 242.*

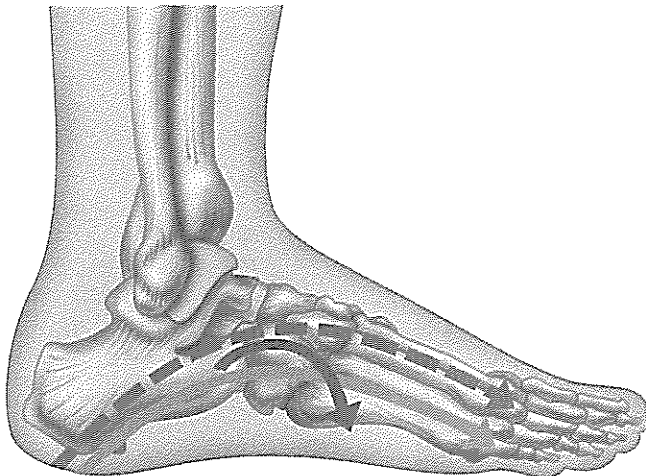


FIGURE 8.1 *Fibrous joints, page 249.*

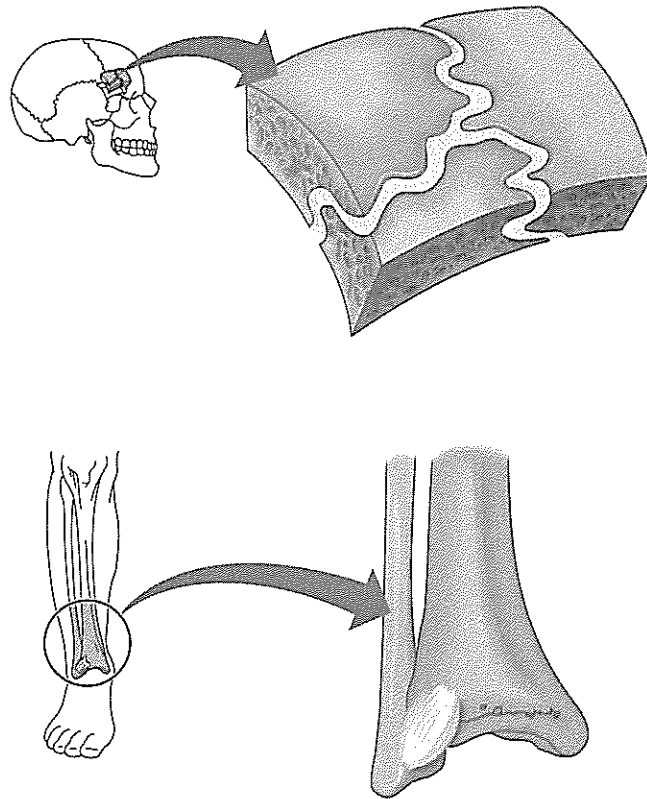


FIGURE 8.2 *Cartilaginous joints, page 250.*

